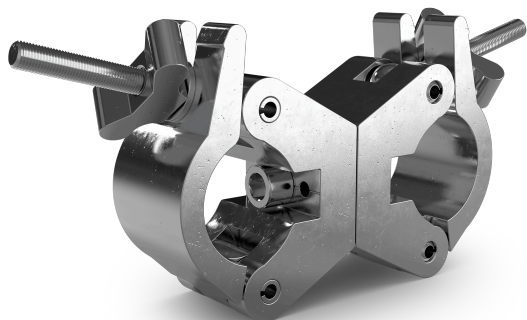


## CTC-50SCL

An aluminum anodized swivel coupler clamp designed for 2-inch (50 mm) truss, featuring a robust 1,650 lb (750 kg) load capacity for secure mounting. Perfect for professional stage and event rigging where heavy fixtures require secure and flexible attachment to standard trussing.



- Engineered for a substantial 1,650 lb (750 kg) maximum load capacity.
- Attaches securely to any standard 2-inch (50 mm) diameter truss or pipe.
- Features a full 360-degree swivel for maximum rigging flexibility and positioning.
- Built with anodized aluminum for enhanced durability and corrosion resistance.
- Ideal for demanding touring, theatrical, and permanent installation environments.
- The robust design ensures a non-slip grip that protects the truss finish.

### SPECIFICATIONS

#### Clamp

**Color:** Natural aluminum, clear anodized

**Load capacity:** 1,650 lb (750 kg)

**Fits:** 2 inch (50 mm) truss

**Weight:** 2.8 lb (1.3 kg)

**Dimensions:** 11.5 x 1.9 x 4.5 in (292 x 50 x 114 mm)