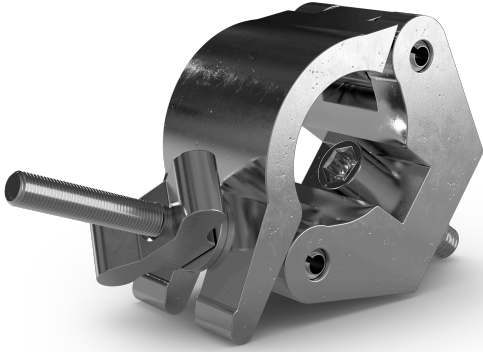


## CTC-50HC



A heavy-duty, anodized aluminum clamp featuring a threaded M12 bolt and a 1,650 lb load capacity for mounting to 2-inch truss.

Ideal for safely and securely rigging heavy lighting fixtures, audio equipment, and other stage elements in professional event and entertainment productions.

- Engineered to safely support heavy professional equipment up to 750 kg (1,650 lb).
- Built from anodized aluminum for exceptional strength and corrosion resistance.
- Designed for a secure, non-slip fit on standard 50 mm (2-inch) truss.
- Provides a threaded M12 bolt for a strong and reliable fixture connection.
- Features a design that grips firmly while protecting truss from damage.
- Offers a versatile rigging point for diverse lighting and audio applications.

### SPECIFICATIONS

#### Clamp

**Color:** Natural aluminum, clear anodized

**Threaded Bolt:** M12

**Load capacity:** 1,650 lb (750 kg)

**Fits:** 2 inch (50 mm) truss

**Weight:** 1.4 lb (0.6 kg)

**Dimensions:** 5.75 x 1.9 x 4.5 in (146 x 50 x 114 mm)